

Clean Water Summit Partners



Future Training Topics

Michael Flores
SSS WDR Training Task Force
CWEA

Jim Fischer
Fischer Compliance

Proposed Training Resources – Phased Development Plan

Phase 1 (Feb 23-Mar 23)

Videos

- Overview of Order
- Continuation of Coverage
- Certifying and Uploading SSMP to CIWQS
- Designating an LRO
- Spill Emergency Response Plan Requirements

Graphic Aides

- Spill Categories (pdf)
- Calendar of Due Dates (pdf)
- Timeline of Requirements for Existing Enrollees to Continue Coverage (pdf)

Phase 2 (Apr 23-May 23)

Videos

- Spills from Enrollee-Owned/Operated Laterals
- Spill Reporting/Notification
- Voluntary Reporting/ Notification for Spills from Private Laterals
- Designating a Data Submitter

Graphic Aide

- Spill Monitoring/Reporting Requirements (pdf)

Phase 3 (Jun 23 – Sep 23)

Videos

- Submitting the Electronic Service Area Boundary Map
- Applying for New Regulatory Coverage
- Transfer of Regulatory Coverage
- Termination of Regulatory Coverage
- Audits and Audit Report Submission Due Dates
- System Performance Analysis Graphs
- Submitting the Annual Report and System Performance Graphs

Future Training Topics

Spill Emergency Response Plan Updates

Improving Collaboration and Coordination

Sewer System Management Plan Audits and Order Enforceability

Recordkeeping and Information Management

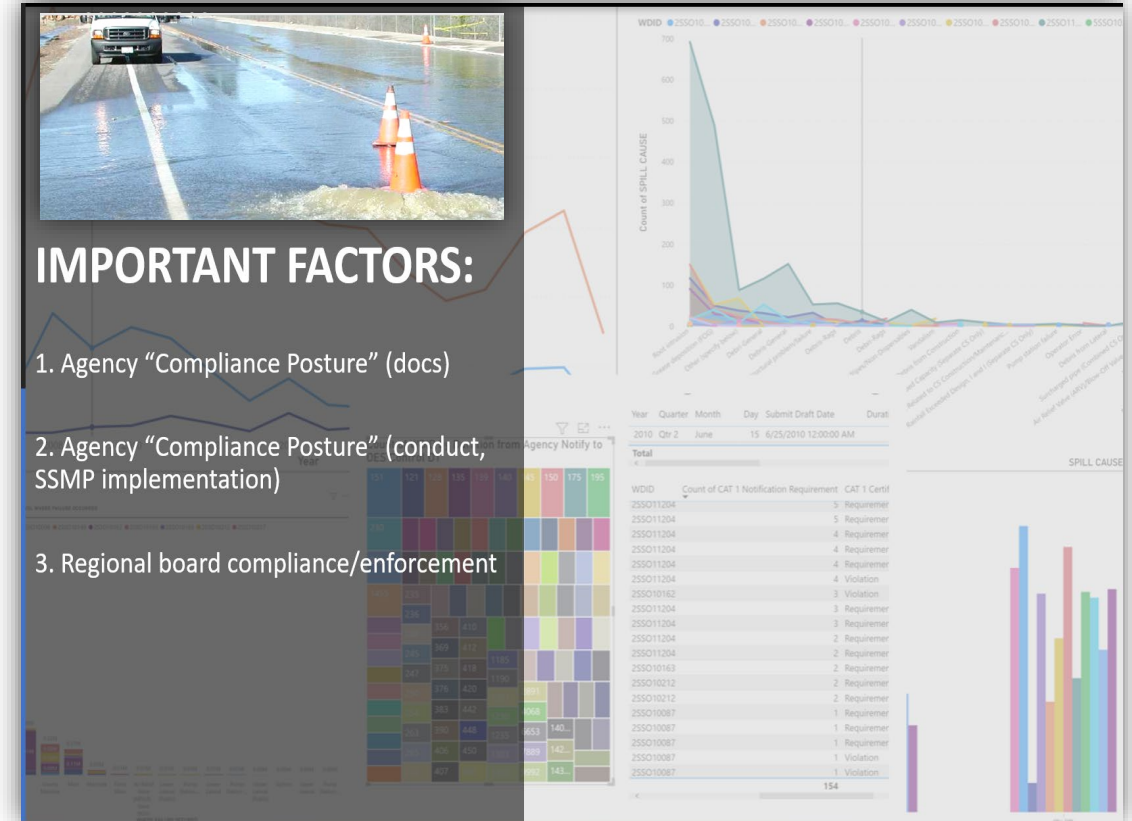
System Assessment, Evaluation and Prioritization

System Resilience

Spill Emergency Response Plan Updates

Due by June 4, 2023 for existing enrollees

- Spill Categories (5.13.1)
- Pre-planned coordination with other agencies/departments prior, during and after spill event (D.6)
- Spill Emergency Readiness (D.6)
- Monitoring and Reporting Timeframes (E1.1;E1.3)
- Spill Documentation (E1.2.1; E1.3)
- Spill Volume Estimation (E1.2.2)
- Water Quality Monitoring (E1.2.3)



Spill Emergency Response Plan Updates

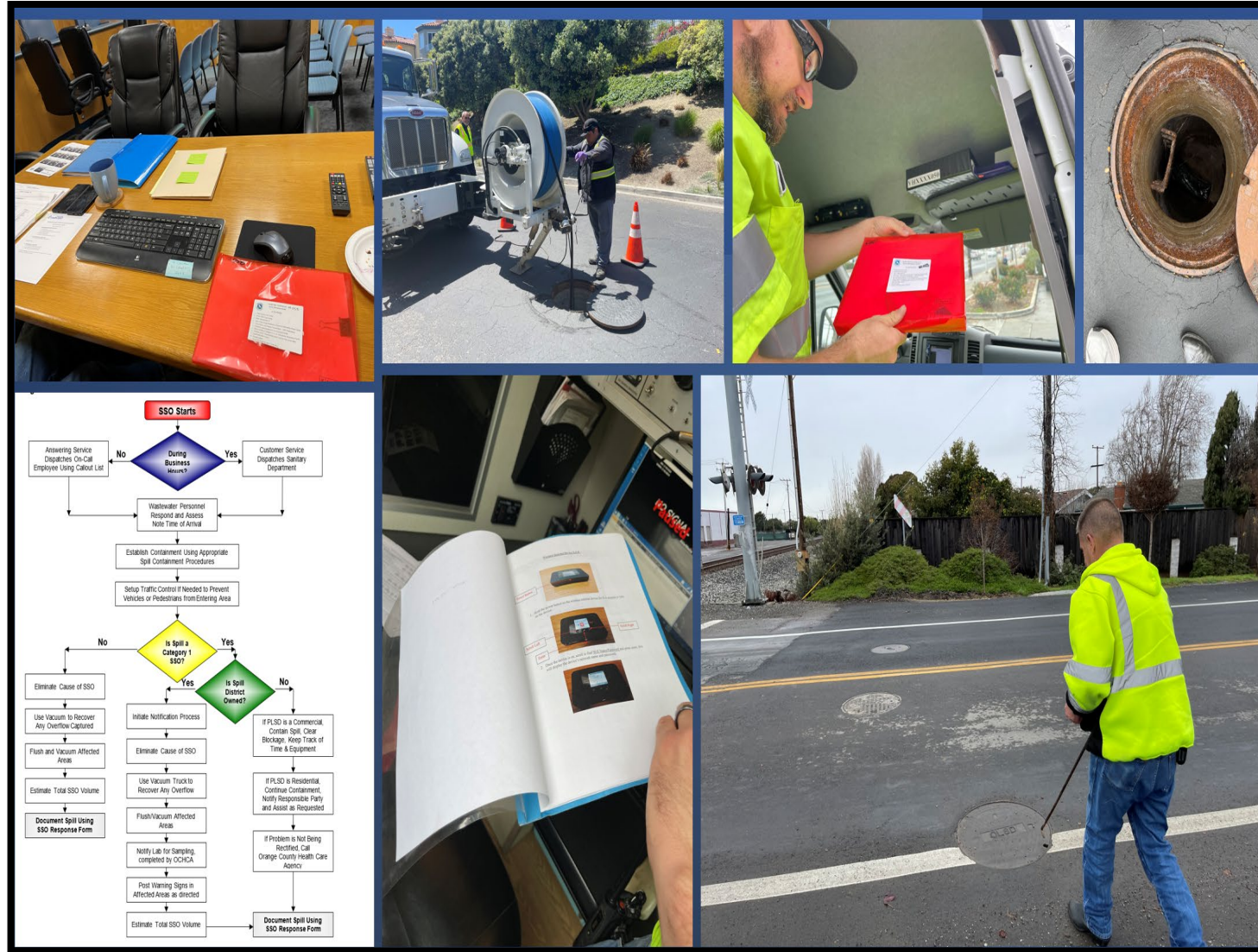
Requirement	Key Actions	Citations	Agency Ratings(0 - 5)	
Provision D.7		When a sanitary sewer overflow occurs, Enrollee shall take all feasible steps and necessary remedial actions to include any wash down water.	3	
Provision D.7	1) control	1) control or limit the volume of untreated or partially treated wastewater discharged;	2	G
Provision D.7	2) terminate	2) terminate the discharge, a	5	
Provision D.7	3) recover	3) recover as much of the wastewater discharged as possible for proper disposal,	3	
Provision D.7		The Enrollee shall implement all remedial actions to the extent they may be applicable to the discharge and not inconsistent with an emergency response plan, including the following:	2	G
Provision D.7	1) intercept	(i) Interception and rerouting of untreated or partially treated wastewater flows around the wastewater line failure;	4	
Provision D.7	2) vacuum	(ii) Vacuum truck recovery of sanitary sewer overflows and wash down water;	3	
Provision D.7	3) cleanup	(iii) Cleanup of debris at the overflow site;	1	G
Provision D.7	4) prevention	(iv) System modifications to prevent another SSO at the same location;	5	
Provision D.7	5) sampling	(v) Adequate sampling to determine the nature and impact of the release;	3	
Provision D.7	6) notification	(vi) Adequate public notification to protect the public from exposure to the SSO.	4	
Provision D.13		Each Enrollee shall develop and implement an overflow emergency response plan that identifies measures to protect public health and the environment. At a minimum, this plan must include the following:	2	G
Provision D.13	1) notification	a. reg.	3	
Provision D.13	2) responses	b.	1	G
Provision D.13	3) procedures	c. age Wa hea be i s shall State Law, and other applicable Regional Water Board WDRs or NPDES permit requirements. The SSMP should identify the officials who will receive immediate notification;	4	
Provision D.13	4) procedures	d. Procedures to ensure that appropriate staff and contractor personnel are aware of and follow the Emergency Response Plan and are appropriately trained;	2	G
Provision D.13	5) procedures	e. Procedures to address emergency operations, such as traffic and crowd control and other necessary response activities; and	5	
Provision D.13	6) reasonable steps	f. A program to ensure that all reasonable steps are taken to contain and prevent the discharge of untreated and partially treated wastewater to waters of the United States and to minimize or correct any adverse impact on the environment resulting from the SSOs, including such accelerated or additional monitoring as may be necessary to determine the nature and impact of the	4	

2006 WDR

Requirement	Part	Page	Subparts	Citations	Agency Ratings (0 - 5)
WDR-Spec	5.12	23	5.12.1.1	Within six (6) months of the Adoption Date of this General Order, the Enrollee shall update and implement its Spill Emergency Response Plan, per Attachment D, Section 6. (Spill Emergency Response Plan) of this General Order.	4
WDR-Spec	5.12	24	5.12.1.2	The Enrollee shall certify, in its Annual Report, that its Emergency Spill Response Plan is up to date.	4
WDR-Spec	5.12	24	5.12.1.3	The Spill Emergency Response Plan shall include measures to protect public health and the environment. The Enrollee shall respond to spills from its system(s) in a timely manner that minimizes water quality impacts and nuisance by:	3
WDR-Spec	5.12	24	5.12.1.3.1	Immediately stopping the spill and preventing/minimizing a discharge to waters of the State;	2
WDR-Spec	5.12	24	5.12.1.3.2	Thoroughly recovering, cleaning up and disposing of sewage and wash down water; and	1
WDR-Spec	5.12	24	5.12.1.3.3	Cleaning publicly accessible areas while preventing toxic discharges to waters of the State.	3
ATT D	SSMP	D.6	D.6.1	The Plan must include an annually-updated Spill Emergency Response Plan to ensure prompt detection and response to spills to reduce spill volumes and collect information for prevention of future spills. The Spill Emergency Response Plan must include procedures to:	2
ATT D	SSMP	D.6	6.1.1	Notify primary responders, appropriate local officials, and appropriate regulatory agencies of a spill in a timely manner;	2
ATT D	SSMP	D.6		health agencies, water with or reach waters of the State;	1
ATT D	SSMP	D.6		requirements of this General al Water Board Orders;	1
ATT D	SSMP	D.6		the Spill Emergency Response	5
ATT D	SSMP	D.6		and other necessary response	5
ATT D	SSMP	D.6	6.1.6	Contain a spill and prevent/minimize discharge to waters of the State or any drainage conveyance system;	5
ATT D	SSMP	D.6	6.1.7	Minimize and remediate public health impacts and adverse impacts on beneficial uses of waters of the State;	3
ATT D	SSMP	D.6	6.1.8	Remove sewage from the drainage conveyance system;	2
ATT D	SSMP	D.6	6.1.9	Sanitize the spill area and drainage conveyance system in a manner that does not inadvertently impact beneficial uses in the receiving waters;	1
ATT D	SSMP	D.6	6.1.10	Implement technologies, practices, equipment, and interagency coordination to expedite spill containment and recovery;	1
ATT D	SSMP	D.6	6.1.11	Implement pre-planned coordination and collaboration with storm drain agencies and other utility agencies/departments prior, during, and after a spill event;	1
ATT D	SSMP	D.6	6.1.12	Conduct post-spill assessments of spill response activities;	1
ATT D	SSMP	D.6	6.1.13	Document and report spill events as required in this General Order; and	3
ATT D	SSMP	D.7	6.1.14	Annually, review and assess effectiveness of the Spill Emergency Response, and update the Plan as needed	4

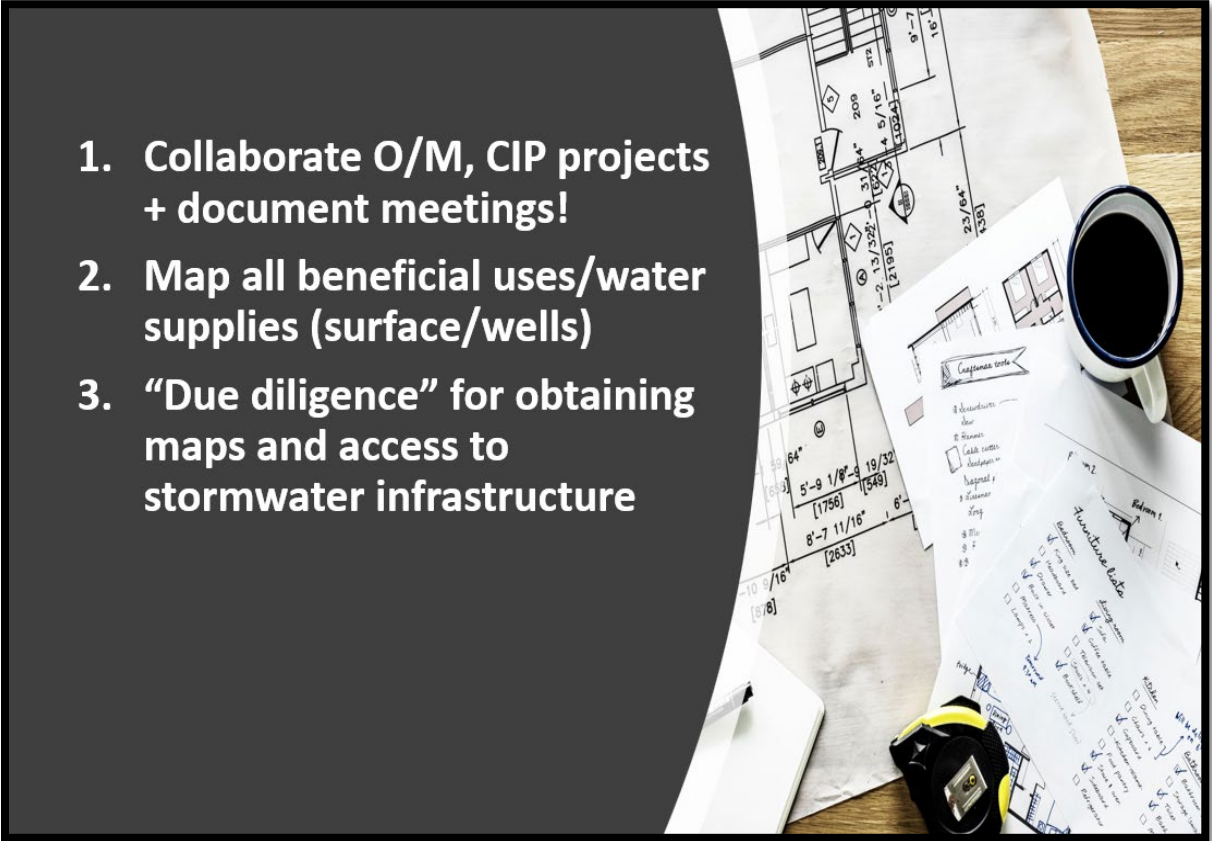
2022 WDR
2022-0103-DWQ

Spill Emergency Response Plan Updates



Improving Collaboration and Coordination

- Between Operations, Engineering and Consultants
 - Joint coordination during planning, design, and construction of capital improvement projects. (D.8.4)
- With External Agencies
 - Water Agencies (E1.3.1.2; E1.3.2.2)
 - Locating Municipal Water Intakes
 - Stormwater Agencies and Other Utility Agencies/Departments (D.6)
 - Pre-planned coordination prior, during and after a spill event

- 
1. Collaborate O/M, CIP projects + document meetings!
 2. Map all beneficial uses/water supplies (surface/wells)
 3. “Due diligence” for obtaining maps and access to stormwater infrastructure

Sewer System Management Plan Audits and Order Enforceability

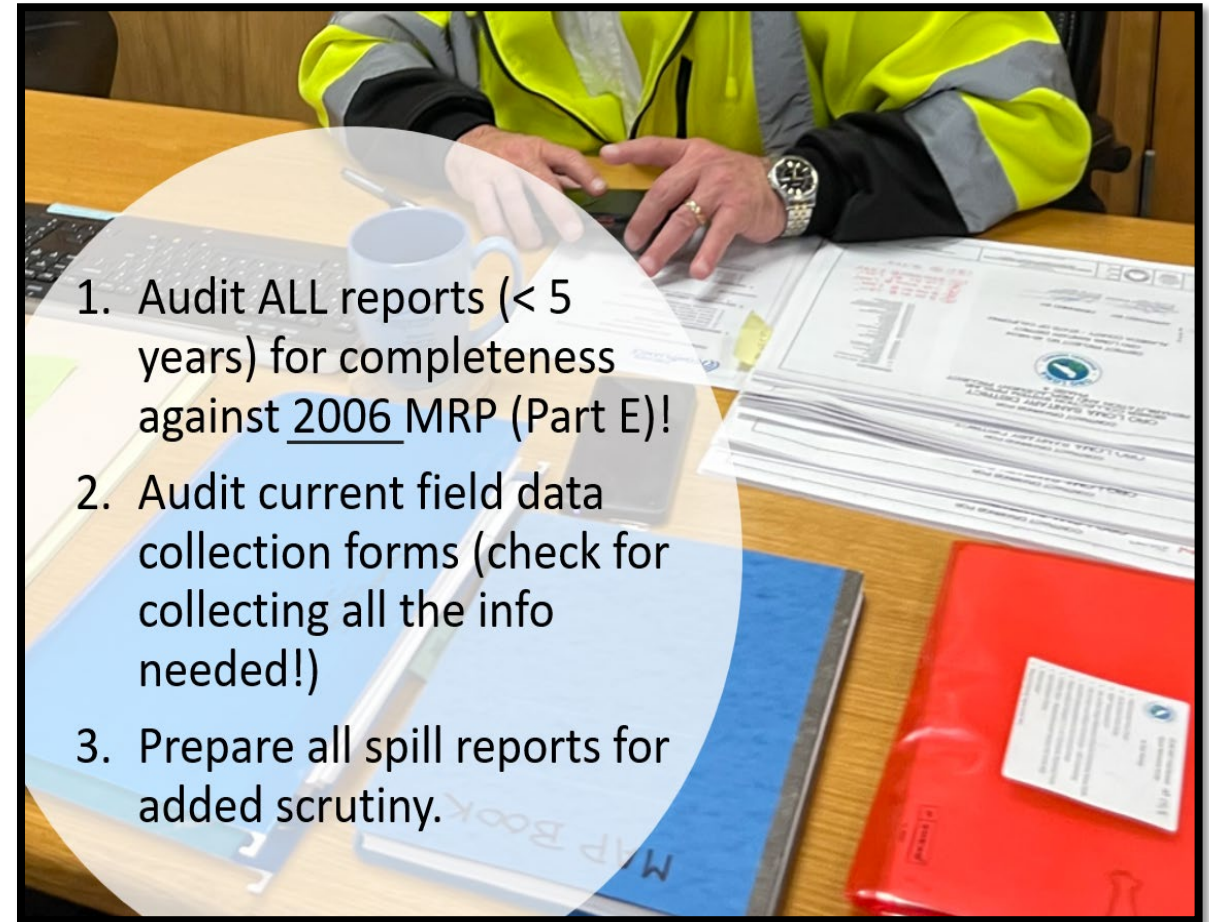
- Audit procedure and practices (D.10)
 - Determining audit scope and scale
- Driving and tracking audit follow-up actions (E1.4.7)
- Preparation for regulatory inspection (6.4.2)
- Understanding regulatory liabilities and Order enforceability (6.1)

1. Prepare Audits for Scrutiny before uploading!
2. Complete SWRCB Pre-Inspection Questionnaire + reference all data.
3. Evaluate EFFECTIVENESS of all elements.
4. Make TABLE OF COMMITMENTS until next Audit due.
5. Incorporate Audit Findings in next SSMP Update; include commitments and carry-over items.



Recordkeeping and Information Management

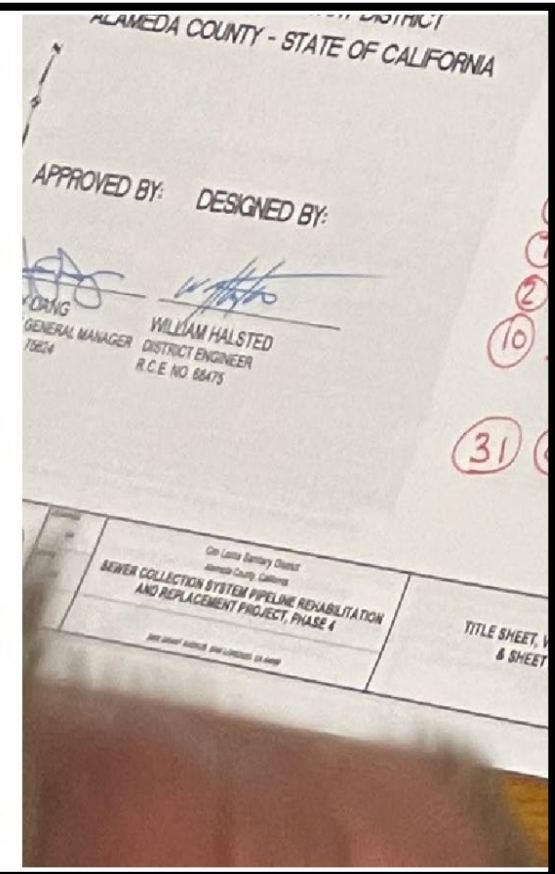
- Asset inventory (D.4.1)
- Spill documentation (E1.2.1; E1.3)
- Operation and maintenance activities (D.4.2)
- System evaluation and condition assessment (D.8.1)
- Sewer System Management Plan implementation activities (E1.4.6)
- Audit findings and status of corrective actions (E1.4.7)



System Assessment, Evaluation and Prioritization

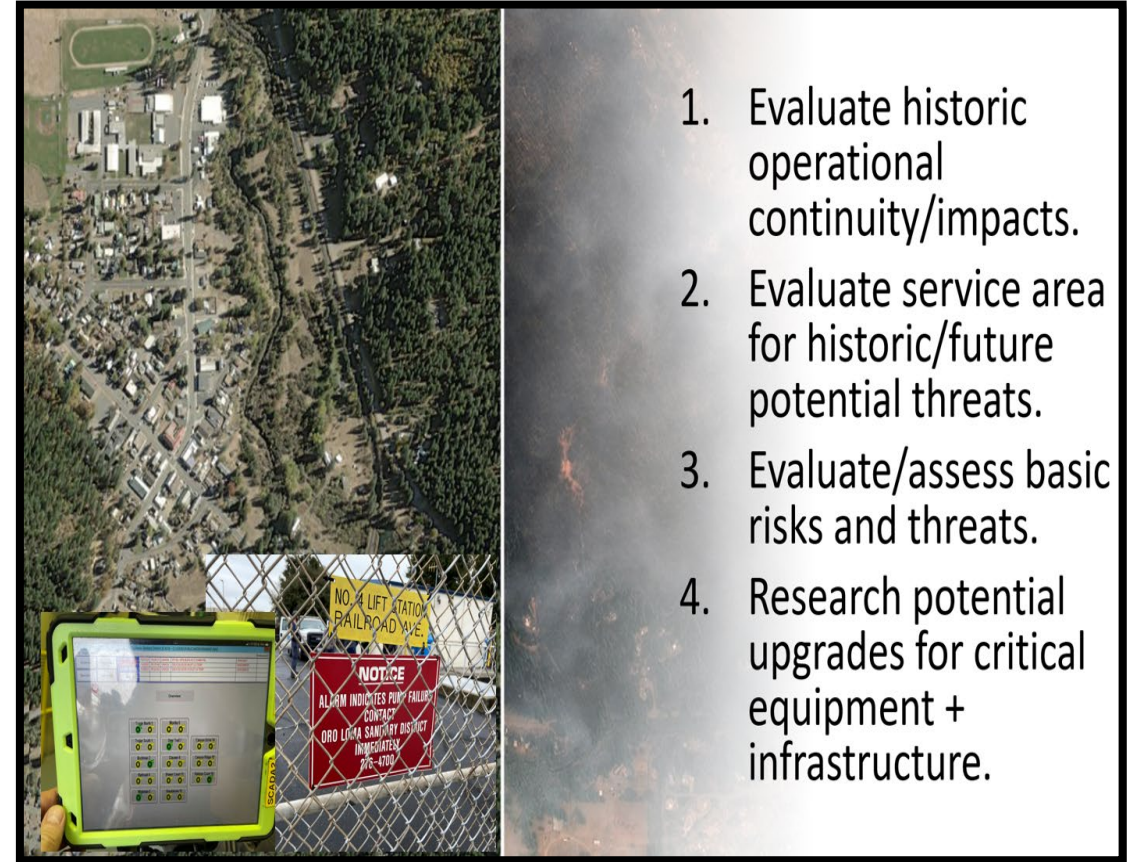
- Determining and justifying the amount of system to assess annually (D.8.1)
- Assessing condition and consequence to assess spill risk (D.8.1)
- Available approaches and methods to assess system condition (D.8.1)
- Guidance for assessing potential sewage leakage which can be reasonably expected to discharge to waters of the State (D.8.1)
- Prioritizing and tracking of capital improvement corrective actions (D.8.3)

1. Check quality of R/R program!
2. Update short/long-term schedules.
3. Update issue locations.
4. Update CIP/needs.
5. Summarize completed CIP projects (<5 years).



System Resilience

- Assessing climate change impacts (D.8.1)
 - Identify system assets vulnerable to direct and indirect impacts of climate change, including but not limited to:
 - Sea level rise;
 - Flooding and/or erosion due to increased storm volumes, frequency, and/or intensity;
 - Wildfires; and
 - Increased power disruptions.
- Protecting system infrastructure (D.8.2)
 - Assessing increases in erosive forces in canyons and streams near underground and above-ground system components due to larger and/or higher intensity storms



Questions

Contact Information:

Michael Flores
CWEA

(714) 785-9421

michael.flores
@hdrinc.com

Jim Fischer
Fischer
Compliance

(916) 606-5275

jim@fischerco
mpliance.com

