



Photo from city of Redding.

NORCAL
& SOCAL
EVENTS

Introduction to Electrical and Instrumentation Technology in the Water Industry

EVENT INFO

NORTHERN CALIFORNIA

Tuesday, May 23

Central Contra Costa Sanitary
1250 Springbrook Road
Walnut Creek, CA 94597

REGISTER FOR NORCAL

bit.ly/eic-23-walnutcreek

SOUTHERN CALIFORNIA

Wednesday, June 28

Inland Empire Utilities Agency
6075 Kimball Ave
Chino, CA 91708

REGISTER FOR SOCAL

bit.ly/eic-23-chino

TIME

7:30 a.m. to 3:30 p.m.

REGISTRATION

\$185 Members
\$235 Non-Member

Interested in being a workshop sponsor? Contact Amy Lai at 510.382.7800 ext. 103 or alai@cwea.org for more details.

This one-day Electrical, Instrumentation, and Controls Workshop is being held in Northern and Southern California. Space is limited so register today.

Dive into the fundamentals and theories behind various electrical and instrumentation devices, equipment, and components found in the water and wastewater industry. The class will equip you with supportive knowledge and demonstrate how each component plays a role in the electrical and instrumentation technology.

Earn up to **7.2 CWEA contact hours.**

Who should attend: Electrical and I&C technicians, engineers, operators, mechanics, students, and anyone interested in learning about electrical and instrumentation technology.

Presenter: **Wilson G. Wong**

Wilson G. Wong is the Control Systems Specialist for Union Sanitary District, where he has worked for the past 16 years.

Wilson performs maintenance and installation of various electrical and instrumentation devices, programming PLCs and HMIs, and developing SCADA screens in support of monitoring and controlling the transporting and treatment of wastewater. Recently, he was part of a team that reviewed and updated the CWEA Electrical and Instrumentation Technologist Certification Program.

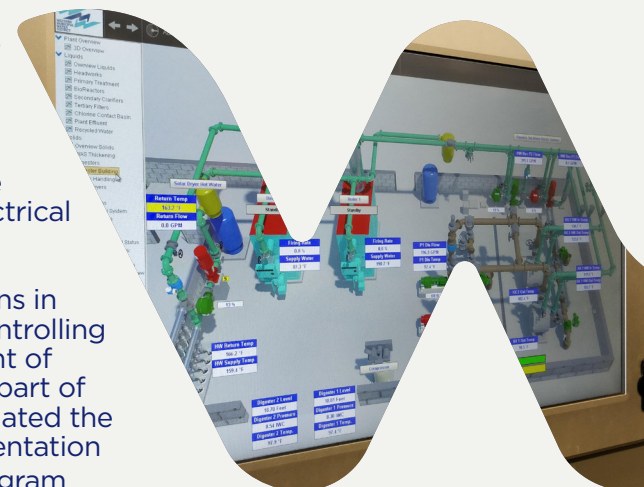


Photo from Western MWD

Introduction to Electrical and Instrumentation Technology in the Water Industry

TIME	EVENT
7:30 - 8:00 a.m.	REGISTRATION & BREAKFAST
8:00 - 8:10 a.m.	Introduction
8:10 - 8:40 a.m.	Electrical Safety
8:40 - 9:25 a.m.	Basic Electricity & Electronics
9:25 - 9:55 a.m.	Principle of Motors
9:55 - 10:10 a.m.	BREAK
10:10 - 10:40 a.m.	Motor Controls
10:40 - 11:00 a.m.	Introduction to Measurement and Control
11:00 - 11:30 a.m.	Flow Measurement
11:30 - 11:50 a.m.	Pressure Measurement
11:50 - 12:50 p.m.	LUNCH
12:50 - 1:15 p.m.	Level Measurement
1:15 - 1:35 p.m.	Temperature Measurement
1:35 - 1:55 p.m.	Analytical Instruments
1:55 - 2:10 p.m.	BREAK
2:10 - 2:40 p.m.	Programmable Logic Controller
2:40 - 3:10 p.m.	SCADA, Network
3:10 - 3:20 p.m.	Summary
3:20 - 3:30 p.m.	CLOSING



**PROTECTING CALIFORNIA'S MOST
CRITICAL RESOURCE**

REGISTER ONLINE >