

July 2017



# BARSCREEN BEE

The Official Newsletter of the Northern Sacramento Valley Section  
of the California Water Environment Association



[www.cwea.org/nsv](http://www.cwea.org/nsv)

## NSVS EXECUTIVE BOARD

### President

John Dobson  
City of Redding  
530 225-4443  
[jdobson@ci.redding.ca.us](mailto:jdobson@ci.redding.ca.us)

**Vice President  
VACANT AND IN  
NEED OF A  
VOLUNTEER**

### Secretary-Treasurer

Corey Klibert  
CH2M Hill  
530 229-3393  
[corey.klibert@ch2m.com](mailto:corey.klibert@ch2m.com)

### 2-Year Director

Brianna Juhrend,  
Carollo Engineers  
916-576-4718  
[BJuhrend@carollo.com](mailto:BJuhrend@carollo.com)

### 1-Year Director

Beverly Hann  
Carollo Engineers  
916 565-4888  
[bhann@carollo.com](mailto:bhann@carollo.com)

The Barscreen Bee is a publication of the Northern Sacramento Valley Section of the California Water Environment Association. Articles, announcements, job postings, questions, etc. should be e-mailed to the newsletter editor, Tracy Wyhliedko at [Newsletter.Editor@CWEA.NSVS](mailto:Newsletter.Editor@CWEA.NSVS) or call (530) 224-4319.

Web site manager:  
Nolan Randall  
(530) 244-3558  
[WWW.CWEA.ORG/NSV](http://WWW.CWEA.ORG/NSV)



## Welcome to Oroville for Training

**Tuesday, July 18th, 2017**

Feather River Tribal Health

2145 5th Avenue, Oroville, CA 95965

8:30 **SIGN-IN and NETWORK** with your peers over coffee & donuts.

9:00 **“OROVILLE DAM UPDATE”**

Randy Fessler, California Department of Water Resources

9:50 **“SUSTAINABLE GROUNDWATER MANAGEMENT ACT”**

Mary Randall, California Department of Water Resources

10:40 **“NEW WASTEWATER REGULATIONS FOR DENTAL OFFICES”**

Brandon Bishop, Industrial Waste Analyst, City of Redding and  
Tracy Wyhliedko, Industrial Waste Supervisor, City of Redding

11:30 **“SAMPLE COLLECTION AND CHAIN OF CUSTODY”**

Joe Trapasso III, Client Services Representative and  
Jim Altobell, Director of Client Services  
Silver State Analytical Laboratories

12:40 **LUNCH** \$10, cash or check payable to CWEA NSVS.

1:30 **TOUR OF LAKE OROVILLE VISITOR’S CENTER**

917 Kelly Ridge Road, Oroville, CA 95966

**Attendees of technical sessions will be issued up to four Continuing Education contact hours toward CWEA Technical Certification and or 4 SWRCB education points toward wastewater certification.**

To find out if a class qualifies for CWEA continuing education in your area of certification, go to the CWEA web site. Click on Certification - Wastewater Trainers and Educators - CWEA Trainers- Training Subjects, for list of class subjects.

All wastewater relevant sessions count as one education point per 50 minute presentation for the purpose of SWRCB operator certification.

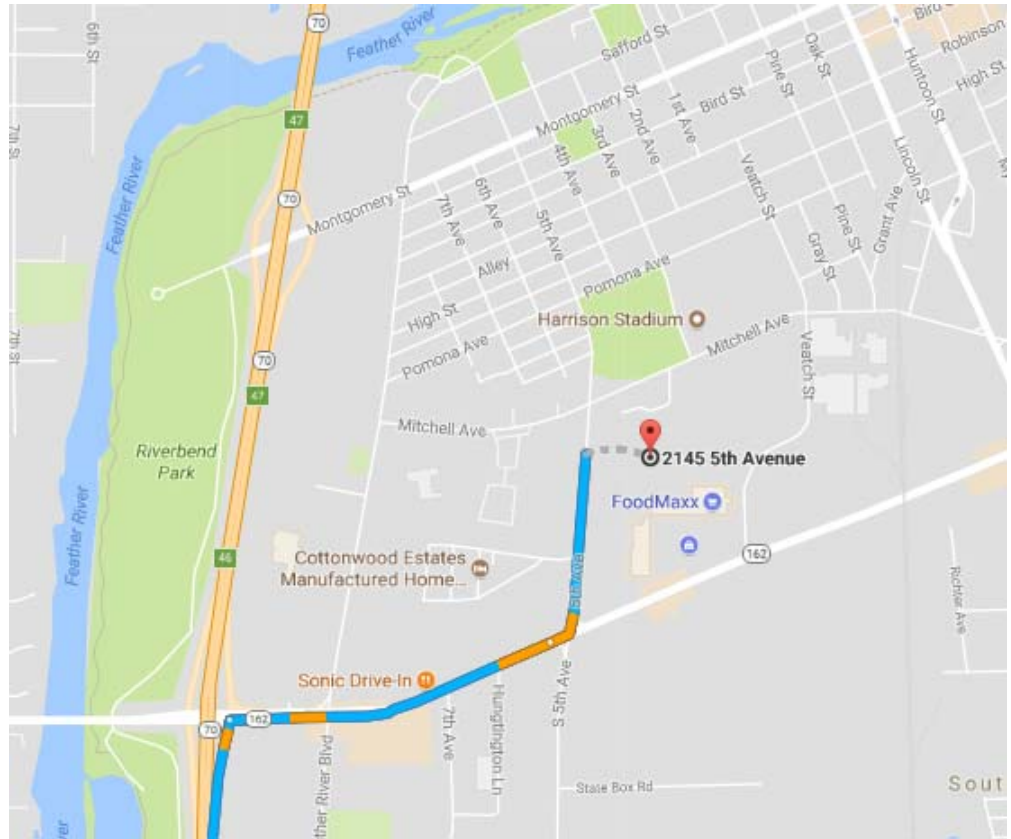
Directions to the Training at  
Feather River Tribal Health  
2145 5th Avenue, Oroville

From the North:

Take I-5 south to Hwy 99 south.  
Follow to Hwy 149/70 to Oroville.  
Take exit #47 Montgomery Street.  
Turn Right on 5th Ave  
Destination is on the left past  
Mitchell Ave.

From the South:

Take Hwy 70 to Oroville.  
Take exit #46 to Hwy 162  
Turn Left on 5th Ave  
Destination is on the Right



## **JOB ANNOUNCEMENTS found on [www.CAWaterJobs.org](http://www.CAWaterJobs.org)**

Operations Specialist, Squaw Valley Public Service District, Olympic Valley, CA, Collection Systems, Operations Specialist I, II or Trainee Salary range is \$4,107-\$4,993 for Specialist Trainee, \$4,895-\$5,950 for Specialist I and \$5,563-\$6762 for Specialist II per month

ADMINISTRATIVE ASSISTANT I, Tahoe-Truckee Sanitation Agency, Truckee, CA, Salary: \$4,233-\$5,147/Month OPEN DATE: 06/27/2017 , CLOSE DATE: 07/12/2017

ASSISTANT DIRECTOR OF UTILITIES, City of Vacaville, Utilities Department, Vacaville, CA, Salary: \$11,971.86 - \$14,550.38 Monthly. Due July 17, 2017.

Marketing Manager, West Yost Associates, Davis, CA, Application Deadline: August 31, 2017

Senior Environmental Laboratory Analyst, Sacramento County, CA, This is a limited continuous filing exam. Filing cut-off is at 5:00 pm on: 6/19/2017, Final filing date 5:00 pm on: 7/18/2017.

## **ADDITIONAL LOCAL JOB ANNOUNCEMENTS**

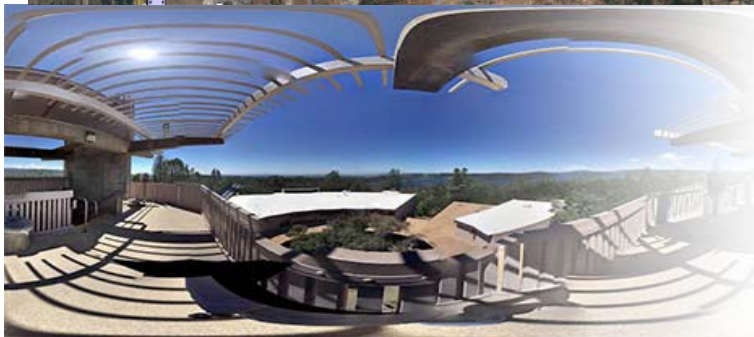
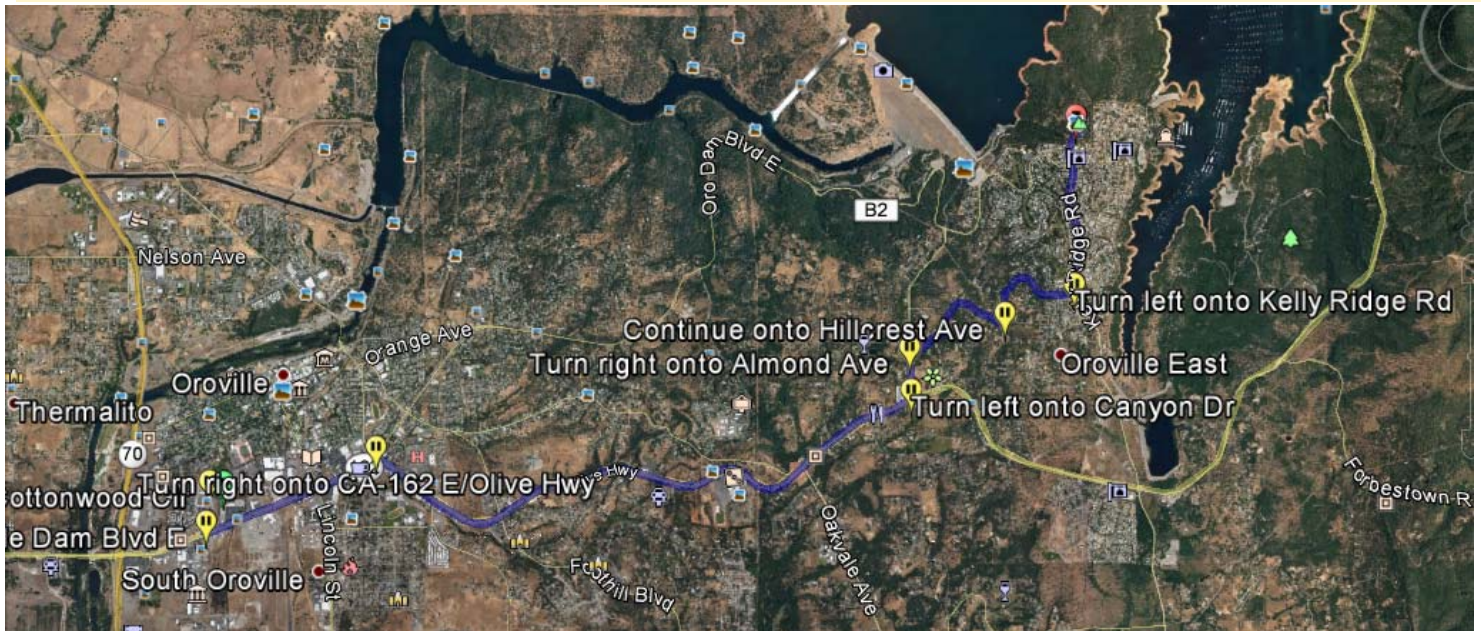
City of Redding Assistant Engineer (Storm Water), Salary \$5,162.00 - \$7,263.00 Monthly, Job Number 163E 501 062017, Closing 7/17/2017 11:59 PM <https://www.governmentjobs.com/careers/reddingca>

Environmental Health Specialist Trainee/Specialist, Shasta County Resource Management Department, Redding, CA Closing Date/Time: 07/31/17 5:00 PM Salary: \$44,988.00 - \$64,536.00 Annually <https://agency.governmentjobs.com/shasta/default.cfm>



## Directions from training to the Lake Oroville Visitor's Center:

Head south on 5th Ave toward Cottonwood Cir. Turn left onto Oro Dam Blvd E/Oroville Dam Blvd E. Turn right onto CA-162 E/Olive Hwy. Turn left onto Canyon Dr. Turn right onto Almond Ave. Continue onto Hillcrest Ave. Turn left onto Kelly Ridge Rd



See the 360 view  
from the tower

 Lake Oroville State Recreation Area on #StreetView

From Lake Oroville Visitors Center's 47-foot viewing tower, visitors can see the lake, the new Bidwell Bar Bridge, and the Sutter Buttes, one of the nation's smallest complete mountain ranges. In its theater, view videos on Oroville construction, the State Water Project, and other water topics. Outside, take a stroll along nearby nature trails.

The Lake Oroville Visitors Center is open every day except Thanksgiving, Christmas, and New Year's Day. It is located at **917 Kelly Ridge Road**. For more information, call (530) 538-2219. **Free** admission.

Also visit DWR's Lake Oroville web site at [www.lakeoroville.water.ca.gov](http://www.lakeoroville.water.ca.gov). For TTY phone service, call (916) 653-6226.

Inside are exhibits showing how Oroville Dam, the nation's tallest, was constructed from more than 80 million cubic yards of materials and how a pumpback operation is used to generate power via the lake's three power plants. Among them is Hyatt Powerplant, excavated out of the bedrock beneath the lake.

The Center is staffed by DWR guides and Parks and Recreation docents. Exhibits by the California Department of Parks and Recreation display the rich historical heritage of the region when Oroville was a bustling Gold Rush town. Others depict the culture of the local Native American tribes and tell the story of Ishi, the sole survivor of his tribe. Nature displays show the kinds of wildlife that inhabit the forested areas around the lake.

<http://www.water.ca.gov/recreation/locations/oroville/orovillevisitor.cfm>



# CALIFORNIA WATER ENVIRONMENT ASSOCIATION NORTHERN SACRAMENTO VALLEY SECTION

## Training Day Report: City of Woodland, Woodland Water Pollution Control Facility, May 16, 2017, By Brianna Juhrend

The first presentation was on Centrifugally Cast Concrete Pipe (CCCP) and Microbiologically Induced Corrosion (MIC). Don Sims, Manufacturers Agent for AP/M Permaform, introduced us to these topics and their products, Centripipe and Conshield. Centripipe is a CCCP system for the structural renewal of culverts and sanitary sewer pipe of any shape and size 30- to 120-inches, without backhoes, repaving, traffic detours, flooding or hazardous construction. Centripipe is 100% environmentally sound, waterproof, fully sealed from end to end, and provides highly effective corrosion protection (ConShield).



(Image Source: <http://www.permaform.net/Products/Centripipe/tabid/94/Default.aspx>)



MIC is a process whereby anaerobic bacteria common to municipal waste flows create hydrogen sulfide gas which, in turn, is metabolized by sulfate-reducing aerobic bacteria (Thiobacillus) which in turn, create massive quantities of sulfuric acid. ConShield is a bacterial agent that is proven to be an effective preventative of MIC because it eliminates Thiobacillus bacteria on contact (like a pin prick to a balloon). As an interesting commentary, Don provided background that the Clean Water Act actually had the consequence of increasing MIC (due to elimination of discharges, such as chromium, which killed Thiobacillus bacteria).

**MME** Municipal Maintenance Equipment  
[www.source-mme.com](http://www.source-mme.com) "Customer Satisfaction is Our Goal!"


**MARK PROTINE**  
 Northern Division Operations and Sales Manager Cell 530-219-4546  
 mprotine@source-mme.com

2360 Harvard Street • Sacramento, CA 95815 • 916-922-1101 • Fax: 922-1034  
 1061 N. Shepard St., Unit B • Anaheim, CA 92806 • 714-632-2871 • Fax: 632-2874  
 4750 Caterpillar Road, Unit D • Redding, CA 96003 • 530-243-4856 • Fax: 243-1447  
 1930 W. Winton Ave., Suite 8 • Hayward, CA 94545 • 510-670-0230 • Fax: 670-9003

**AQUADYNE**  
 ASSOCIATES


Alex Ambrosi

710 C Street, Suite 200 San Rafael, CA 94901  
 415/460-6393 Fax: 415/460-6395  
[alex@aquadyneassociates.com](mailto:alex@aquadyneassociates.com)

**PACE** ENGINEERING   
 Complete engineering services with attention to individual client needs since 1976

**THOMAS W. WARNOCK, P.E.**  
 PRINCIPAL ENGINEER

1730 SOUTH STREET REDDING, CA 96001 e-mail: [twarnock@paceengineering.us](mailto:twarnock@paceengineering.us)  
 (530) 244-0202 FAX (530) 244-1978

  
**basic**  
 laboratory

2218 Railroad Avenue  
 Redding, California 96001  
 voice 530.243.7234  
 fax 530.243.7494  
[info@basiclab.com](mailto:info@basiclab.com)

Training Day Report (continued for May 16, 2017)

Next - Paul Bedore, M.S. with Robertson-Bryan, Inc. provided regulatory overview and a quick course on Toxicity Testing 101, which included acute vs chronic, how to review toxicity reports, and Toxicity Reduction Evaluations (TREs). Acute toxicity testing exposes organisms to effluent and assesses survival. Interestingly, most facilities are required to more frequently perform acute testing; however, most issues are related to chronic toxicity. Chronic toxicity testing exposes organisms to effluent and assesses biological responses, including survival, growth, and reproduction. The selected organisms allow for the effect of chronic toxicity to be seen throughout the food chain.



Take home messages from Toxicity Testing 101:

- 1) Operators are (typically) first to know about plant issues,
- 2) Non-routine operations can affect effluent quality,
- 3) Regularly convey issues and status to management and laboratory staff, and
- 4) Cancel or delay testing if a plant issue arises.



  
**NCPI**  
*NATIONAL CLAY PIPE INSTITUTE*

**Larry G. Tolby**  
Vice President

*Member Company's*  
Gladding, McBean & Co. 916-645-3341  
Mission Clay Products 510-568-0800

**Technical Services Northwest**  
1009 Eastridge Drive  
Modesto, CA 95355  
209/577-2875 Phone/Fax CA  
lgtncpi@msn.com

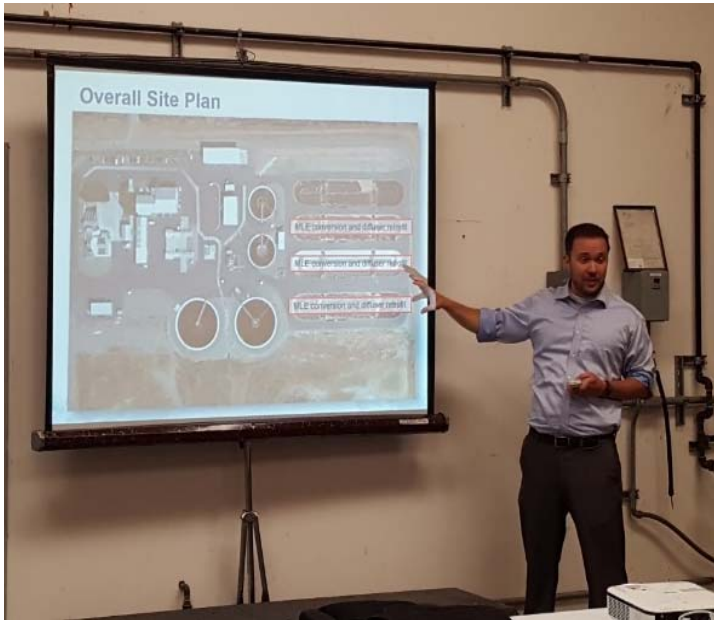
 **CH2MHILL.**

**Nolan Randall, P.E.**  
Project Manager  
Water & Wastewater Process/Design

**CH2M HILL**  
2525 Airpark Drive  
Redding, CA 96001  
Tel 530.243.5831  
Direct 530.229.3341  
Mobile 530.941.6622  
Fax 530.339.3341  
nolan.randall@ch2m.com  
www.ch2m.com  
\*Professional Engineer: CA, NV

 30% PCW, 100% wind power





Last but not least, the aeration system retrofit project at the City of Woodland Water Pollution Control Facility was presented by Rob Hunt, Senior Engineer for Carollo Engineers, Inc. This project included high speed turbo blowers, membrane disk diffusers, hyperboloid mixers, submersible propeller wall pumps, magnesium hydroxide (alkalinity) facility, secondary effluent diversion, and conversion of oxidation ditches to modified Ludzack Ettinger (MLE) bioreactors. The drivers of the retrofit project were to increase aeration capacity and restore process capacity, improve settleability and process stability, meet future nutrient regulations, and increase secondary effluent diversion capacity. The project provided the City of Woodland with additional benefits including reliability and power savings.

A cancellation by the fourth presenter allowed for the tour of the Woodland Water Pollution Control Plant to be bumped up before lunch. Thank you to Josh (City of Woodland) for being a great tour guide!



## NSVS Calendar of Events

Board meetings held at 10:00 a.m.,  
Italian Cottage Restaurant  
2234 Esplanade, Chico.  
Members always welcome.

**CHANGED TO TUESDAYS!!!**

- July 18, Training, Oroville
- August 22, Board Meeting 10:30 a.m.
- Sept 19, Training in Yuba City
- Oct 17, Board Meeting 10:30 a.m.
- Fall 2017 Young Professionals Social
- Nov 14, Training, Location T.B.A.
- Dec 12, Board Meeting 10:30 a.m.
- Jan 2018: Awards Banquet, T.B.A.

**STUDY • DESIGN • CONSTRUCTION SERVICES**  
 Drinking Water • Wastewater • Water Reuse • Biosolids  
 Groundwater • Desalination • Reverse Osmosis

---

2880 Gateway Oaks Drive, Suite 300  
 Sacramento, CA 95833  
 phone 916•565•4888  
 fax 916•565•4880

offices throughout  
 the western U.S.

[carollo.com](http://carollo.com)

**Water & Wastewater Equipment**  
**RAY SPRAGUE**

TEL: (916) 933-5500  
 FAX: (916) 933-5573  
 CELL: (916) 995-5500

[www.jbiwater.com](http://www.jbiwater.com)  
[raysprague@jbiwater.com](mailto:raysprague@jbiwater.com)



WE ARE **H<sub>2</sub>**OBSESSED.

  
**carollo**  
*Engineers...Working Wonders With Water®*

**WATER**  
OUR FOCUS  
OUR BUSINESS  
OUR PASSION

Water is all we do. It's all we think about, every day of every week. As a matter of fact, for more than 80 years, Carollo has been dedicated to solving our clients' most challenging water problems. And the results have been inspirational. We have created some of the most innovative solutions in the industry while providing the highest level of service to our customers. Today, we have grown to become the largest engineering firm in the country solely dedicated to water and wastewater.\*

\*Per *Engineering News-Record*, April 25/May 2, 2016, "Top 500 Design Firms" ranking.

1.800.523.5826 | [carollo.com](http://carollo.com)



2017  
NSVS-Northern Sacramento  
Valley Section Advertising



Advertisements in the bi-monthly Northern Sacramento Valley Section (NSVS) "Barscreen Bee" newsletter may be purchased for:

\$75 per year for a business-card size advertisement,

\$150 per year for a half page advertisement (8.5 x 5.5 inches), or

\$300 per year for a full page advertisement (8.5 by 11 inches).

APPLICATION (check one):

NSV Advertisement for \$75/year \_\_\_\_\_ or \$150/year \_\_\_\_\_ or \$300/year \_\_\_\_\_

DATE: \_\_\_\_\_

NAME \_\_\_\_\_

AGENCY \_\_\_\_\_

TITLE \_\_\_\_\_

MAILING ADDRESS \_\_\_\_\_

CITY \_\_\_\_\_ STATE \_\_\_\_\_ ZIP \_\_\_\_\_

PHONE \_\_\_\_\_

E-MAIL ADDRESS \_\_\_\_\_

Submit application and payment to the NSVS Secretary/Treasurer:

Mr. Corey Klibert  
C/O CH2M Hill  
2525 Airpark Blvd.  
Redding, Ca. 96001

Email: [Corey.Klibert@ch2m.com](mailto:Corey.Klibert@ch2m.com)

Make checks payable to: NSVS CWEA

Enclose a business card or submit electronic advertisement (jpg, gif, or pdf) to the Newsletter Editor at:  
[Newsletter.Editor.CWEA.NSVS@outlook.com](mailto:Newsletter.Editor.CWEA.NSVS@outlook.com).